

THE KIVIATHON
November 17, 2016 (NLF staff)
Hosted by Kansalliskirjasto (National Library of Finland)
Helsinki, Finland

HANDOUT

INTRODUCTIONS

The Core Organizers who will be present at the event:

- Gordon Dunsire, Chair of the [RSC](#)
- Deborah Fritz, Co-owner of [TMQ](#) and co-creator of [RIMMF](#)

The Coaches:

- Gordon Dunsire
- Deborah Fritz
- Marja-Liisa Seppälä
- Katerina Sornova

The Team Leaders:

- Kiti Vilkki-Eriksson
- Minna Kantanen
- Tapani Moisio
- Ulla Ikäheimo
- Ville Huhtala
- Katri Kananen

GOALS

- Create RDA data for resources by Aleksis Kivi, or about him or his works:
 - An r-ball of our combined data will be made available at <http://rballs.info/topics/p/kivi/>
 - This data can be exported to RDF for experimentation
 - This is a hackathon not a training session—we will be building on pre-session investment in learning RIMMF; we will not be able to answer every RDA and RIMMF question immediately
- Identify and explore RDA-related issues
- Have fun and get excited about RDA

OUTLINE OF THE DAY

17-Nov	TOPICS
8:30-9:00	Registration
9:00-9:20	Introductions, outline of the day, and setup
9:20-10:00	Brief review of RIMMF functionality
10:00-12:30	Rimmfing resources
12:30-13:30	Lunch
13:30-14:30	RDA/RIMMF/RDF discussion
14:30-15:15	More rimmfing
15:15-15:30	Break
15:30-16:20	RDA and Linked Data presentation (RSC Chair)
16:20-16:30	Next Steps

TABLES AND THEIR TOPICS

Day One (Nov 17)

TABLES	TOPICS
1	book-like materials, the team leader Kiti Vilkki-Eriksson
2	mixed materials (mainly audio-visual materials and books), the team leader Minna Kantanen
3	music materials, the team leader Tapani Moisio
4	mixed materials, the team leader Ulla Ikäheimo
5	book-like materials, the team leader Ville Huhtala
6	mixed materials, the team leader Katri Kananen (only the first day)

SOURCES OF EXAMPLES

The National Library will be providing resources or photocopies of resources.

If we run out of examples, here are some good sources of digital reproductions:

Google Books (Digitization & Editions)

<https://books.google.com/>

- Add “Full View” to your search (this should show at least title page, verso, table of contents, and (possibly) prefatory material)

Hathi Trust Digital Library (Digitization and Rare materials)

- Contains digitized books, in multiple manifestations based on download formats. Some online versions have restricted access; some are open-access. Make sure to choose Full versions where available.
- Use the advanced search option – the library is too big for a simple general keyword search!
<http://babel.hathitrust.org/cgi/ls?a=page&page=advanced>
 - Limit to: Full view only
 - Refine results: Original format: Book

Internet Archive (Digitization and Rare materials)

- Contains digitized books, in multiple manifestations based on download formats.
- Simple search only (so some false drops).
<https://archive.org/details/texts>

National Library of Scotland Digital Gallery (Rare materials)

- Public domain manifestations of special collections digitized by the Library:
<http://digital.nls.uk/gallery.cfm>

LibriVox

Sound recordings in the Public Domain in the USA:

<https://librivox.org/https://librivox.org/>

SOURCES OF MARC21 records

Our emphasis will be on creating all data, instead of importing legacy data, but if you want to experiment with importing MARC21 data, you can search the database of the Library of Congress using RIMMF's <F3> function. You can also try these other OPACs that allow you to export MARC 21 records. Prefer exporting in UTF8 MARC, or XML if possible.

- LIBRIS: <http://libris.kb.se/>
- Catálogo BNE: <http://catalogo.bne.es/uhtbin/webcat>
- National Library of Scotland: <http://main-cat.nls.uk/vwebv/searchAdvanced>
- Yale University Library: <http://orbis.library.yale.edu/vwebv/>

Practice exporting MARC records from these sources, before you come to the session, if you can.

SOME OTHER USEFUL LINKS

[Aleksis Kivi in Wikipedia](#)

[Aleksis Kivi in Kansallisbiografia](#)

[Aleksis Kivi in Doria](#)

SETUP ON THE DAY

Login to WIFI: Instructions will be provided on-site.

Login to Toolkit Training Access:

Username: **rda-athon**

Password: **rda2016**

This login is active from now, through to December 19, 2016, for participants who do not have Toolkit subscriptions

Twitter hashtag: **#Kiviathon**

Getting ready to rimmf when you arrive (call someone over if you need help)

- **Do you have the most current RIMMF update loaded?**

- Main Menu > Help > Check for updates

If not, go to the download page, and update your version:

<http://www.marcofquality.com/wiki/rimmf3/doku.php?id=download&nocache>

- **Set up your special record prefix**

If you brought a laptop and intend to rimmf some resources, set RIMMF to your assigned prefix (provided during the registration process)

- Options > Setup > Set record prefix
- Enter your assigned prefix
- <Save>
- If prompted to run the record updater, click <No>

- **Open the Base r-ball in RIMMF**

- Main Menu | Tools | Download web folder
- Click on the arrow by the URL box, and choose:
 <http://www.rimmf.com/rbl/KiviBase-161015.zip>
- Click Fetch
- Click <Yes> to switch to that data folder

- Have you bookmarked the **RIMMF User Guide**? If not, do so:

<http://www.marcofquality.com/wiki/rimmf3/doku.php?id=guide>

- Use <Ctrl+Alt+K> to see a list of RIMMF **Function Key** definitions

- Have you bookmarked the “**Most commonly needed RIMMF functions**”? If not, do so:

<http://www.marcofquality.com/wiki/rimmf3/doku.php?id=details:commonfunctions>

SOME THINGS TO REMEMBER

- When importing a MARC Bib record:
 - RIMMF only checks the character strings found in headings fields, so you need to check that any matches that RIMMF makes to Agent and/or Work and Expressions records are correct.
 - If a uniform title is present (130 or 240), then it is important that you import the Authority record for the Work, and/or the Expression (if there is one) before you import the Bib record, if you have access to the authority records. If you do not have access to the MARC21 authority records, then just import the Bib record.
 - Sometimes agents with creator roles may become attached to the Expression as a contributor (because no relationship designator is provided in a MARC record). Link to the Work, instead, with an appropriate designator.
 - Fix extent statements, if they did not map over properly
 - Move data that has been imported to the Note on Manifestation element to a more appropriate element, if at all possible
- Confirm Date of Work and Date of Expression dates are correct, and not questionable
- Change the “Contributor” and “Creator” labels to more specific relationships, if at all possible
- Make new manifestations if any identifying or carrier data is different (e.g. hardback and paperback manifestations with different ISBNs)
- Make new expressions if any content or contributor data is different
- Add translated titles as Variant titles and Work VAP, and then again as VAP to the Expression data to which they apply
- Make sure that Authorized Access Points are unique
- Add Content Type and Language of Expression to all Expression AAPs
- We are concentrating on Works, Expressions, Manifestations, and Agents (Persons, Families, Corporate bodies) and are not working with Item information today.

DOS AND DON'TS

Do:

- have fun!
- question everything: We all have a lot to learn about RDA outside MARC (the FRBR/RDA model)
- think about Relationships (suggest new designators, etc.)
- make a new entity record whenever anything does not match your resource
- check MARC mapping carefully, and suggest improvements
- add more than core elements to the data you provide: think about what will be important for differentiation, identification and/or selection
- use ‘switch template’ to suggest elements you may wish to add to the WEM you are working on
- add all appropriate expression relationships, they are all very useful for distinguishing between different expressions
- for this event, follow pure RDA, and not local policy or even national library practices, if they contradict RDA

Don't:

- think about MARC
- get hung up on descriptive stuff (periods, abbreviations, etc.)
- apply ‘[provider-neutral](#)’ guidelines
- add ISBNs that do not match your manifestation for the resource

EXPORT YOUR R-BALL

When the rimmfing time is done:

- Open the Entity Index <Ctrl+E>
- Click the <Export> down arrow
 - Click on <Select All>
 - Click the <Export> down arrow again
 - Choose <Zip (Rimmf, ie. R-ball)>
- Click the <Export> button
- Add your prefix **before** the filename provided, e.g., **qpq_ei-export-161117.zip**
 - Click <OK> <OK>
- Find the file on your Desktop
- Copy that file to the flash drive provided, and give it to your team leader or a coach

PREP FOR FEEDBACK

Think about feedback that you can provide in the afternoon session. For example:

- Tell us what gave you trouble, e.g.:
 - The RDA model (e.g., new Manifestations, new Expressions)
 - RDA relationships (e.g., which relationship element to use)
 - How to use RIMMF
 - Etc.
- Tell us what would you like to see enhanced, and how:
 - the RIMMF templates
 - the RIMMF instructions
 - the MARC mapping
 - Etc.
- Anything else you want to share ...

ADDITIONAL LINKS

The X-athons page:

<http://rballs.info/xathons/>

The Selmathon page (for future reference):

<http://rballs.info/topics/p/kivi/kiviathon1/>

<http://rballs.info/topics/p/kivi/kiviathon2/>

About RIMMF (RDA data editor)

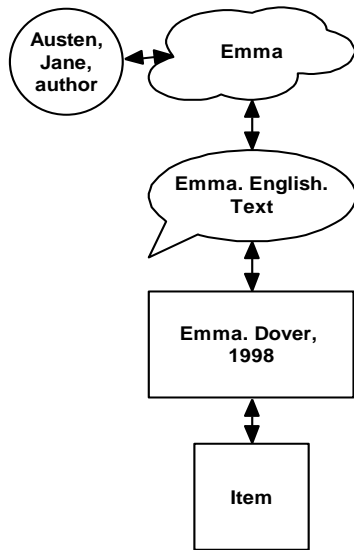
<http://www.rdaregistry.info/rimmf/>

About R-balls:

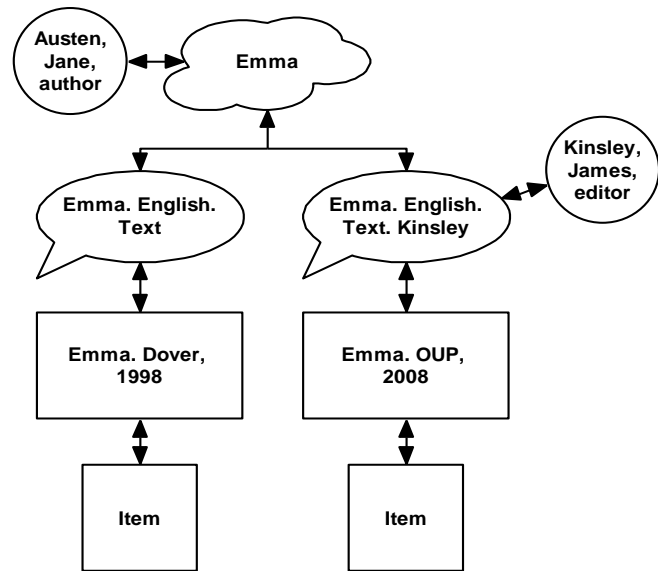
<http://rballs.info/>

SOME VARIATIONS WITHIN THE RDA MODEL (Using Jane Austen's Emma as an example)

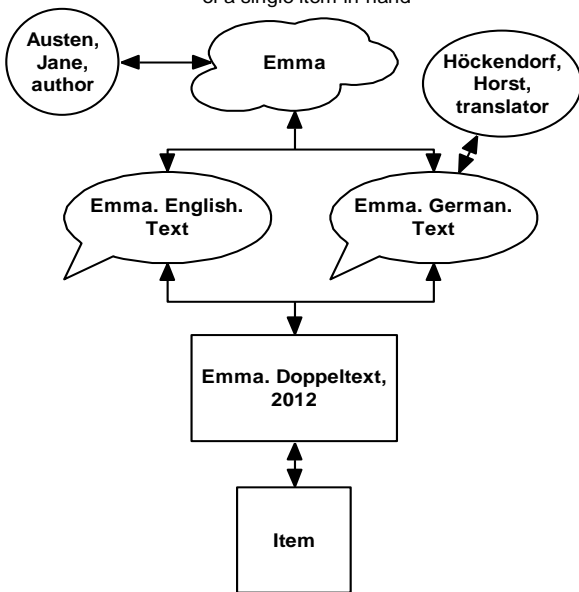
A Work,
Expressed only one way,
Manifested only one way,
and with one item in-hand



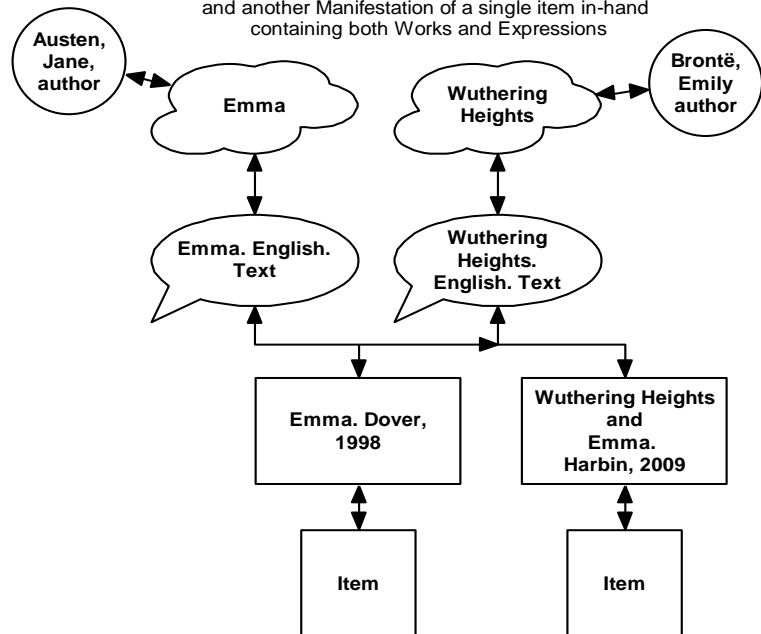
A Work,
Expressed more than one way,
each Expression in a separate manifestation,
of a separate item in-hand



A Work,
Expressed more than one way,
both Expressions in the same Manifestation,
of a single item in-hand



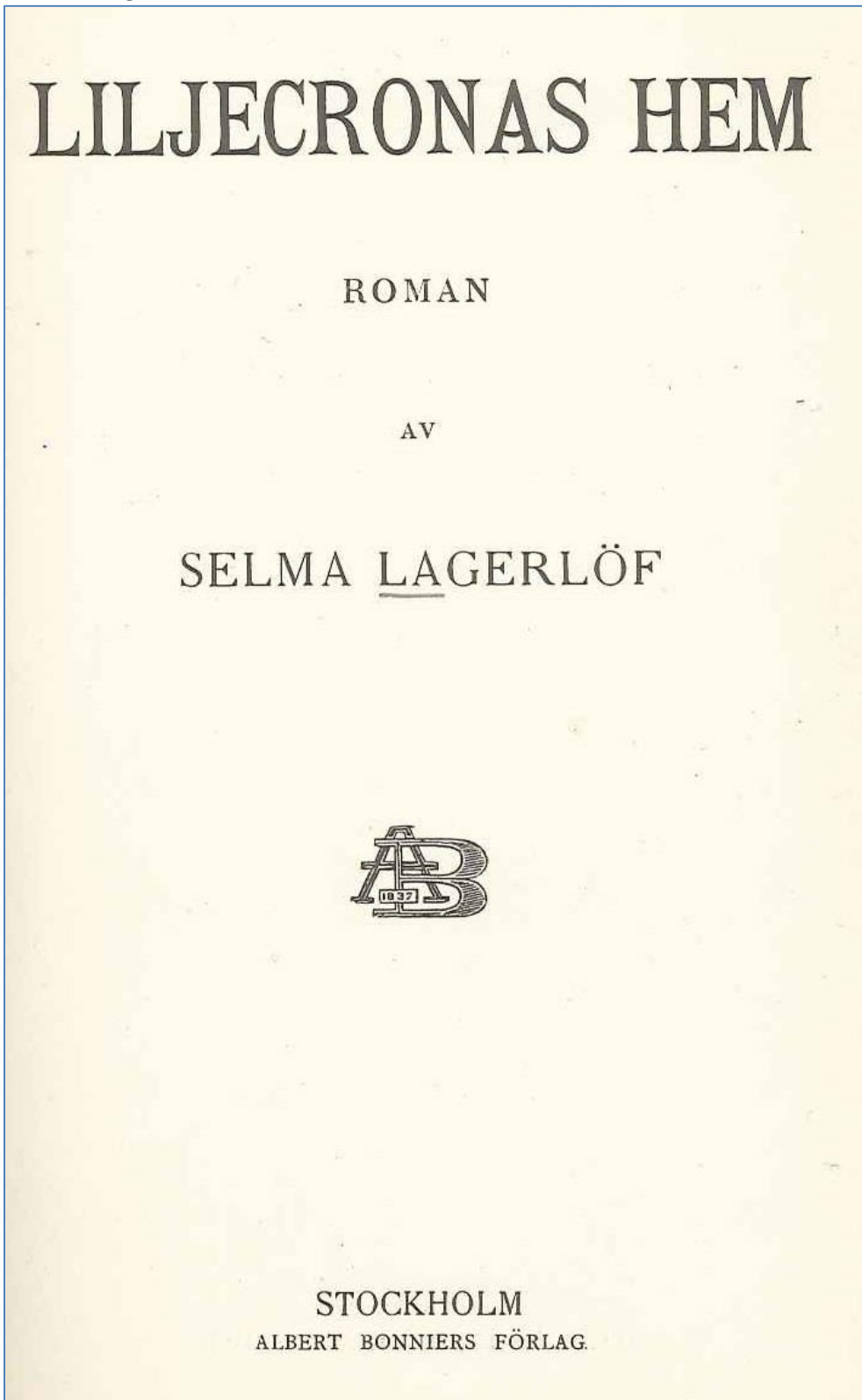
Two Works
each only Expressed one way,
with one Manifestation of a single item in-hand
containing only one of the Works and Expressions,
and another Manifestation of a single item in-hand
containing both Works and Expressions



THE COMMON EXAMPLE

Everyone will start by rimmfing this example, without importing a record

The Title Page:



The Verso:

sidor: 292 s.

mätt: 19 cm

ill. : —

Copyright. Albert Bonnier 1911

STOCKHOLM

ALB. BONNIERS BOKTRYCKERI 1911